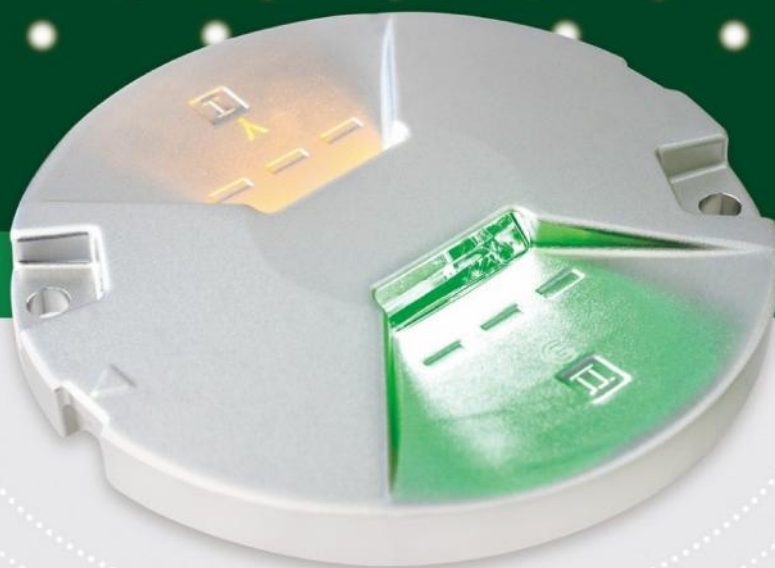


## DTS – 8 Inch LED Inset Lights Taxiway

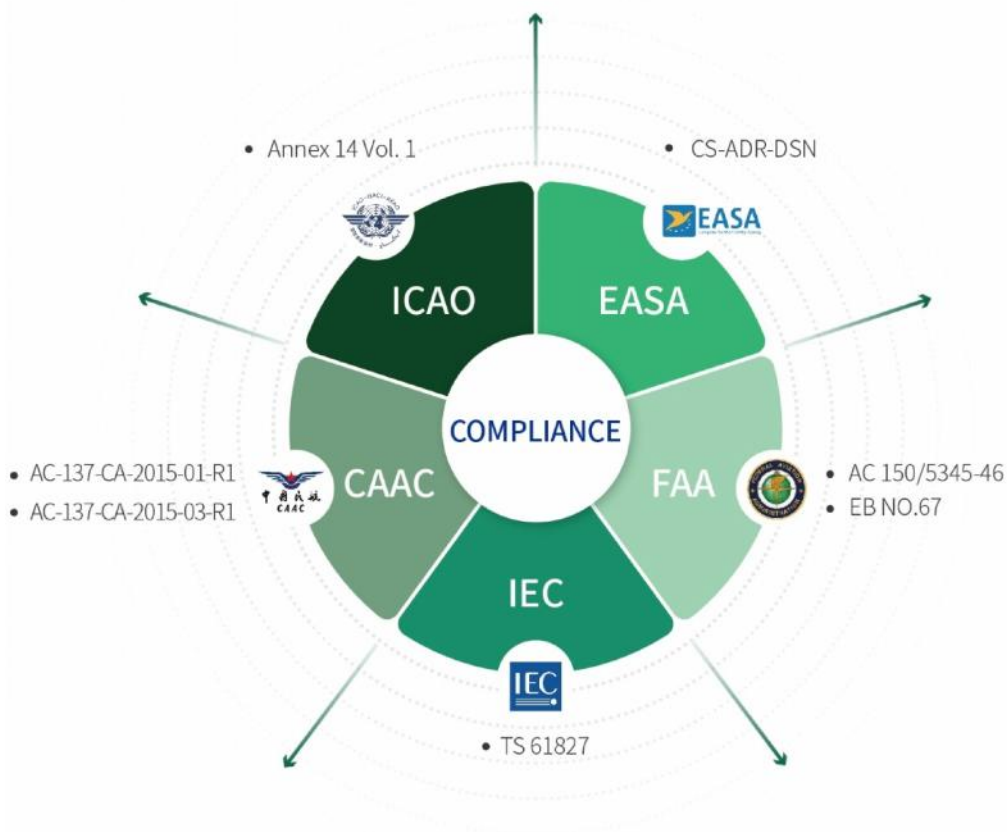
# AIRFIELD GROUND LIGHTING SOLUTIONS



## 8" LED Inset Lights

- TS/IN Taxiway Centre Line-Straight Section • TC/IN Taxiway Centre Line-Curved Section
- SBS/IN Stop Bar-Straight Section • SBC/IN Stop Bar-Curved Section • HP/IN Intermediate Holding Position
  - FOS/IN No-entry Bar-Straight Section • FOC/IN No-entry Bar-Curved Section
- RELS/IN Runway Entrance-Straight Section • RELC/IN Runway Entrance-Curved Section
- RTPS/IN Runway Turn Pad-Straight Section • RTPC/IN Runway Turn Pad-Curved Section

## DTS – 8 Inch LED Inset Lights Taxiway



### FEATURES

- Low protrusion of 6.3mm above ground level
- Modulized electrical driver and LED assembly for simplicity of maintenance
- Efficient and stable optical output, suitable for operation with 6.6A and 2.2A CCRs
- Unique optical design, ensuring luminous efficacy and color consistency
- Strict thermal management solution increasing life expectancy
- Highly conductive aluminium mechanical components with special treatment, suitable for various weather conditions
- Built-in surge protection
- Optional Fail Open System



## DTS – 8 Inch LED Inset Lights Taxiway

### TECHNICAL DATA



#### MECHANICAL

- Diameter 203mm
- Flange Thickness 19mm
- Protrusion Above Ground  $\leq 6.3\text{mm}$
- Depth Below Flange 72mm
- Mounting 2 x M10 bolts
- Static Load Resistance  $\geq 18\text{t}$
- Dynamic Load Resistance 40J



#### ENVIRONMENTAL

- Operating Temperature  $-55^{\circ}\text{C} \sim +55^{\circ}\text{C}$
- Storage Temperature  $-55^{\circ}\text{C} \sim +85^{\circ}\text{C}$
- Protection Class IP68
- Humidity 0~100%



#### ELECTRICAL

- Connection FAA L-823
- Rated Input Current 6.6A/2.2A
- Power Factor  $> 0.9$

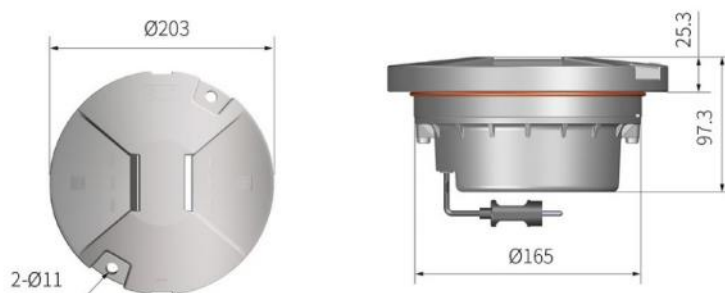
#### • Power Consumption

Taxiway Center Line - unidirectional	9VA	No-entry Bar-Straight section	8VA
Taxiway Center Line - Bidirectional	12.5VA	No-entry Bar-Curved section	20VA
Taxiway Center Line - 2 plugs	2 x 10VA	Runway Entrance-Straight Section	5.5VA
Stop Bar-Straight section	8VA	Runway Entrance-Curved Section	15VA
Stop Bar-Curved section	20VA	Runway Turn Pad	9VA
Intermediate Holding Position	9VA		

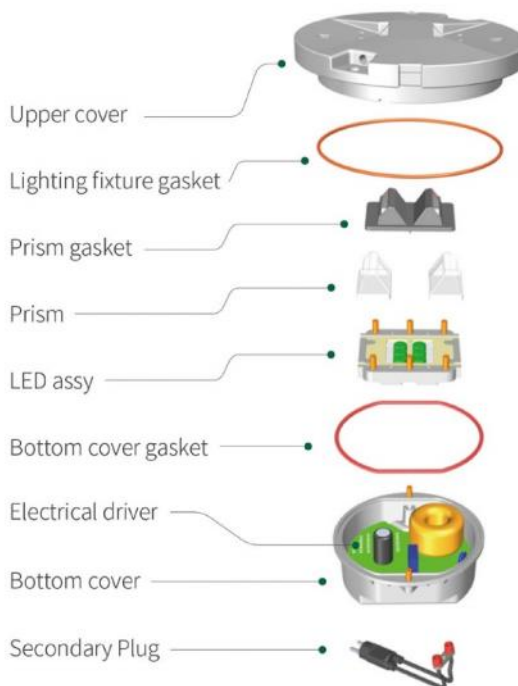
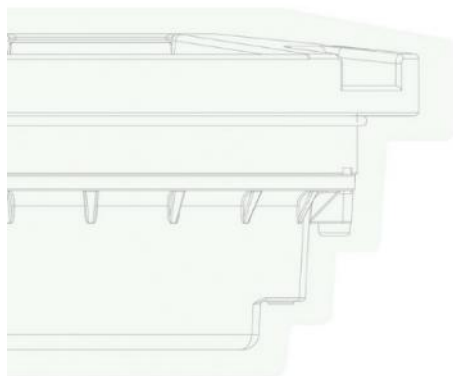
- Fail Open Reaction on output open circuit and output short circuit
- Emission IEC 61000-6-4
- Immunity IEC 61000-6-2
- Service Life LED useful lamp life  $> 80000\text{h}$

# DTS – 8 Inch LED Inset Lights Taxiway

## DIMENSIONS



## COMPONENTS



## ACCESSORIES

- 8 inches shallow base assy (bottom entry/side entry)
- 12 inches shallow base assy (bottom entry/side entry)
- 12 inches deep base assy
- 12-8 adapter ring assy
- L-823 receptacle
- 8 inches light fixture handle

## PACKAGING



Dimensions: 253mm (L) x 223mm (W) x 107mm (H)

Net Weight: 3.7kg (one plug) 4.5kg (two plugs)

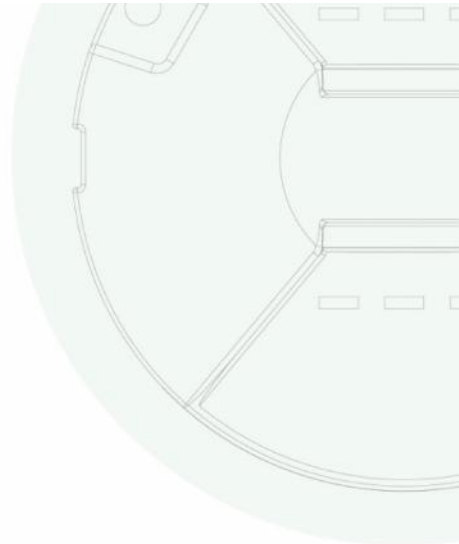
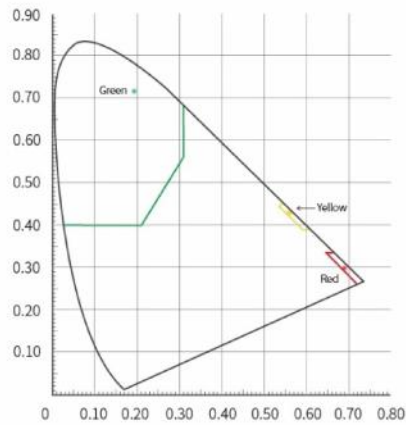
Gross Weight: 3.9kg (one plug) 4.7kg (two plugs)

\* Packaging is subject to upgradation. Above data are reference values.

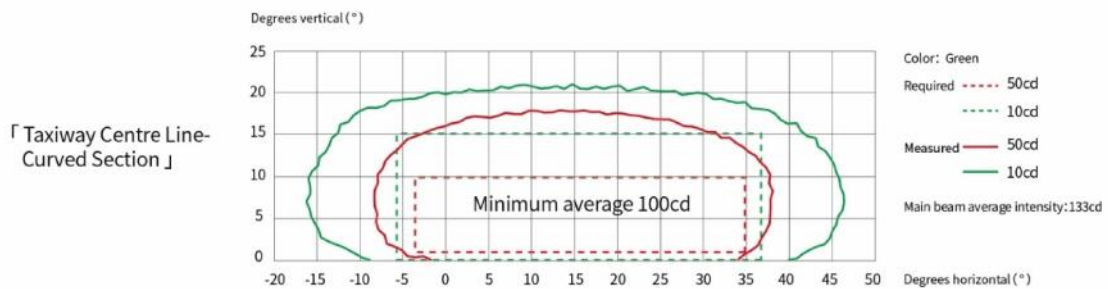
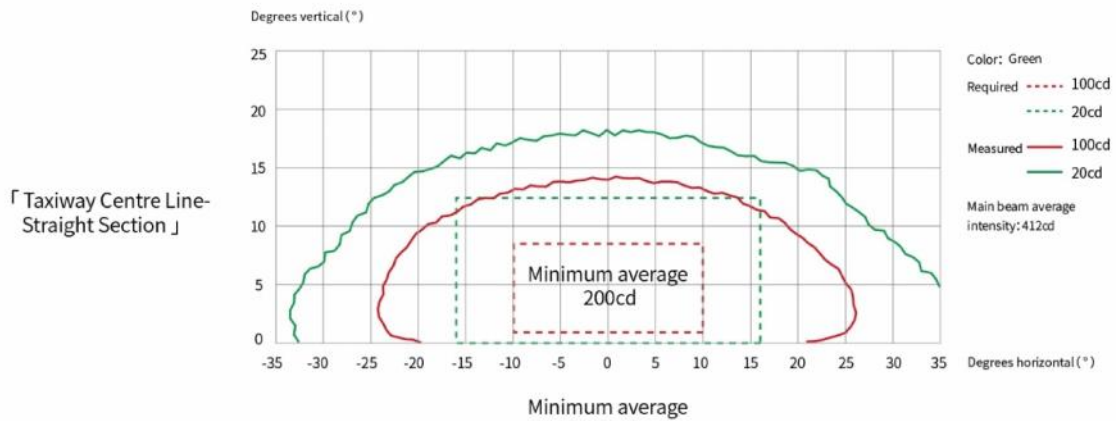


# DTS – 8 Inch LED Inset Lights Taxiway

## CHROMATICITY

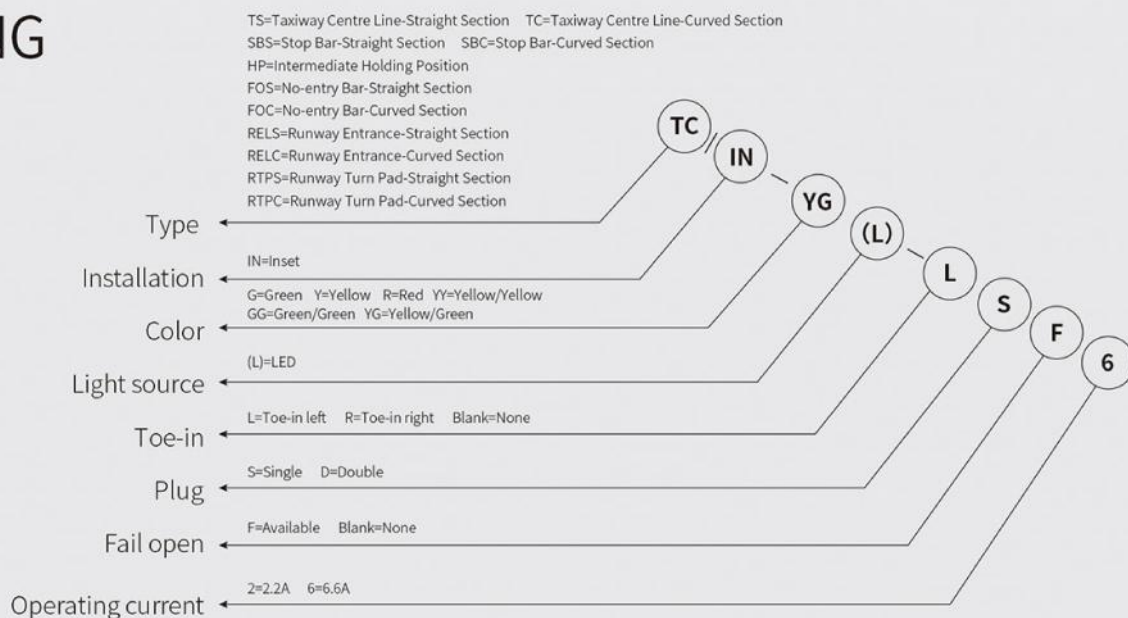


## PHOTOMETRICS



## DTS – 8 Inch LED Inset Lights Taxiway

### ORDERING CODES



★ Accessories should be ordered separately

## DTS – 8 Inch LED Inset Lights Taxiway