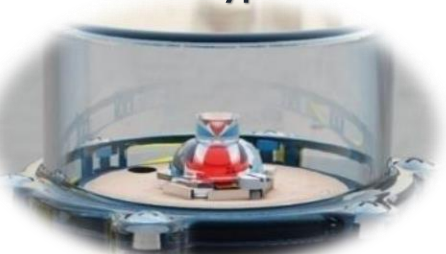
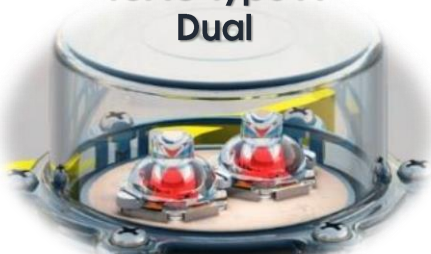


Low Intensity Obstruction Light PULSAR

ICAO Type A



ICAO Type A
Dual



ICAO Type B



Compliance

- ICAO Annex 14, Volume 1,
- Aerodrome Design and Operations, Paragraph 6. Table 6.3 Low intensity obstacle light type A & B.

Application

Low intensity obstacle lights are used for lighting of aeronautical obstacles less than 45 meters high, typically objects and constructions such as buildings, towers, antennae, and airport boarding bridges

Features

- Latest LED technology
- Very Long Operating Life, in excess of 100.000 h.
- Low energy consumption
- Low Voltage versions available
- Stabilized light output
- Compact Design, light weight and easy to install
- Extruded Aluminum body with optimal heat management
- Polyester Aviation Yellow painted body
- Scratch free Polycarbonate lens
- IP67 Protection



PULSAR Type A

CHARACTERISTICS	TYPE A Single	TYPE A Dual	TYPE B
Light intensity	> 10 cd	> 10 cd	> 32 cd
Light colour	red	red	red
Power Supply	12V, 24V, 48V, 110V or 230V	12V, 24V, 48V, 110V or 230V	12V, 24V, 48V, 110V or 230V
Consumption	1.5 W	1,5W or Max. 3 W	4,5 W
Height	144 mm	144 mm	144 mm
Diametre	70 mm	70 mm	70 mm
Protection Degree	IP 67	IP 67	IP 67
LEDs	1	2	3
Stainless Steel Hardware	YES	YES	YES
Polycarbonate Diffuser	YES	YES	YES
Anodized Aluminium body	YES	YES	YES
RAL 1004 painted	YES	YES	YES
2 independent circuits	NO	YES	NO
Warning device	NO (optional)	NO (optional)	NO (optional)

Low Intensity Obstruction Light PULSAR

PULSAR DUAL

- An optional PULSAR Dual version is available that has two LEDs and two independent electronic circuits. Should one circuit fail, the second will continue powering the second LED, ensuring that the light remains operational and still compliant with the requirements set for by ICAO, i.e. minimum of 10 Candelas.
- This unique feature of PULSAR Dual further improves the reliability of this obstacle light by reducing the risk of unserviceability due to the failure of the electronics, enabling the full use of the expected 100.000 hours life time of the LEDs.
- PULSAR Dual gives you virtually TWO lights in a single body.

Dimensions

Very compact: only 70mm dia. x 144mm high,
130 x 100 mounting flange.
Lightweight: 0.780kg.

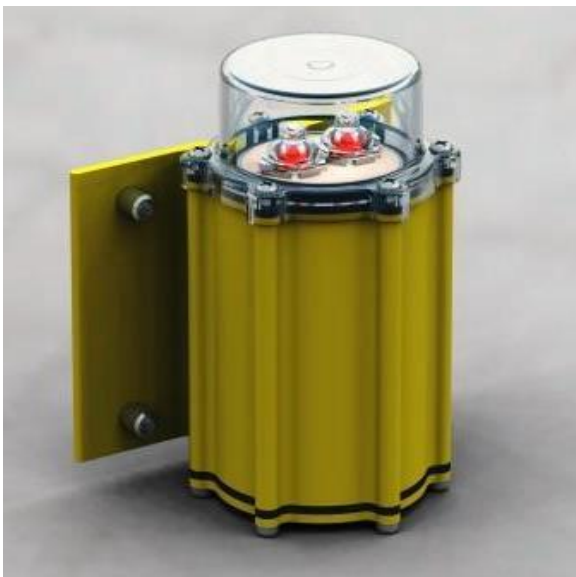
Specification

The body is made of extruded aluminum alloy for an excellent corrosion resistance; the lens is made of high impact resistant and clear polycarbonate, scratch proof and smooth to limit stains deposits.

Mounting

Standard mounting is by means of the bracket incorporated in the light body; suitable for direct attachment on a vertical surface with M6 screws.

An optional set of brackets is available for mounting on tubes with outer diameter between 30 and 70mm.



Pulsra Type A Dual



Pulsar Type B